



47565394001

Edition 6

June 2018

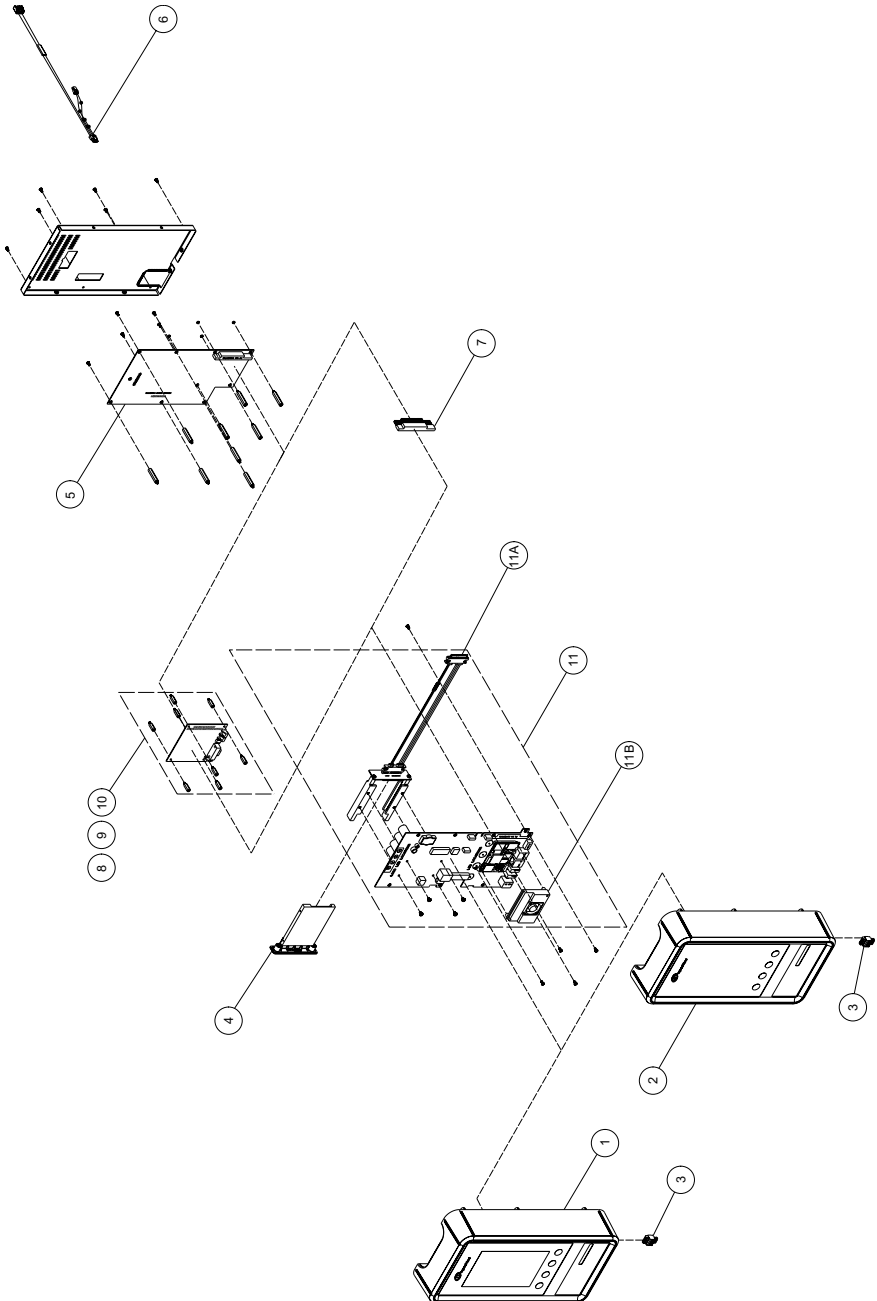
Electric Tool Controller QCD and QCM Series

Parts Information



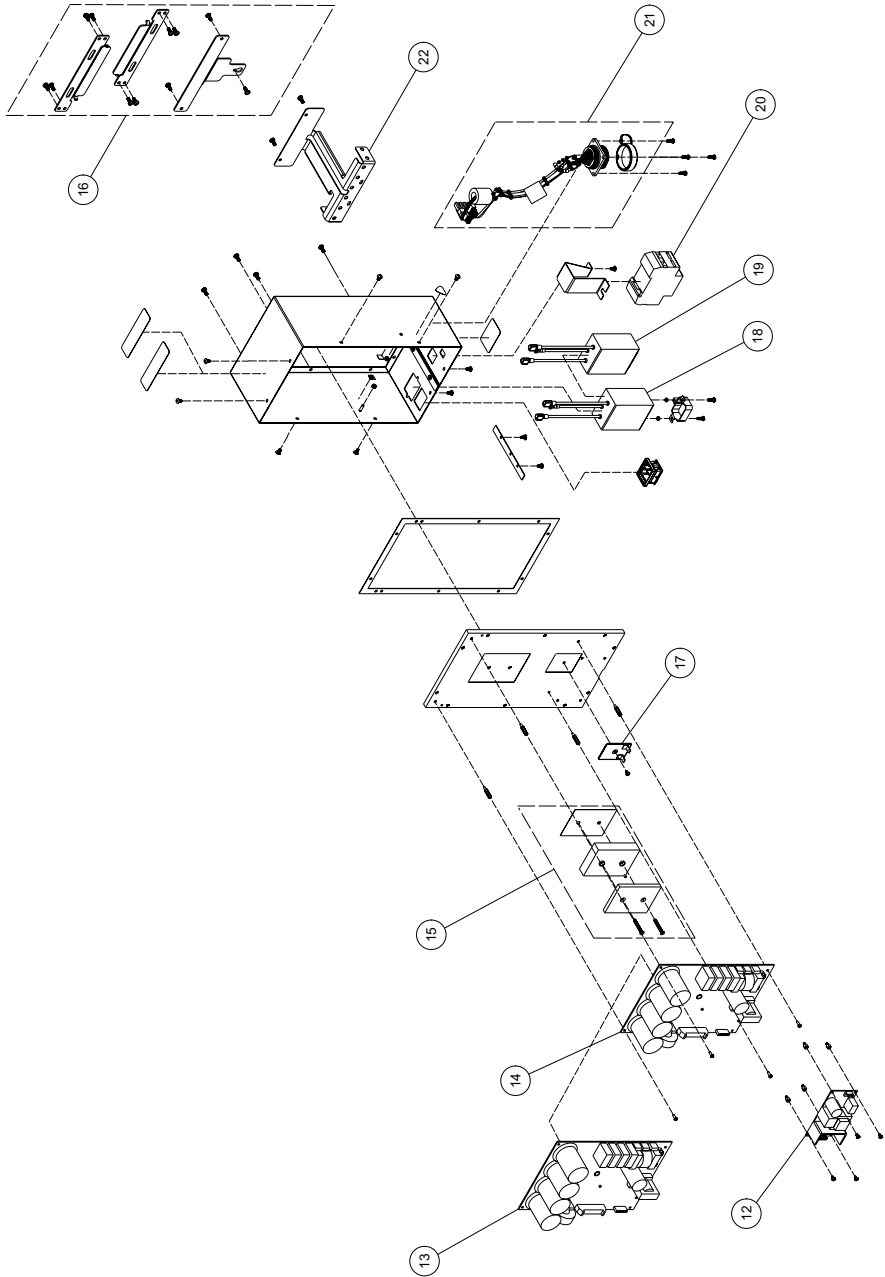
Save These Instructions

Electric Tool Controller, QCD and QCM Series - Exploded View



(Dwg. 47565394-1)

Electric Tool Controller, QCD and QCM Series - Exploded View



(Dwg. 47565394-2)

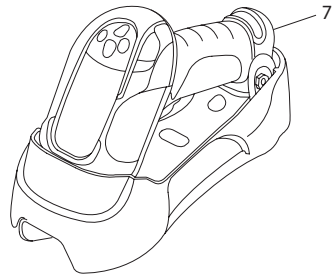
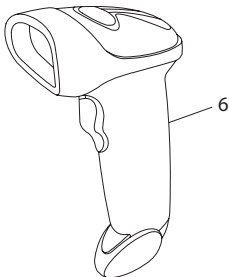
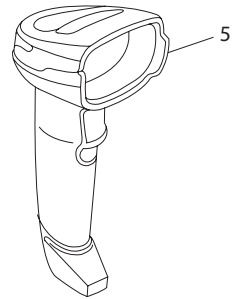
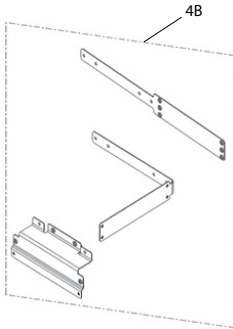
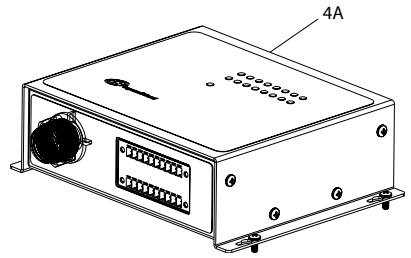
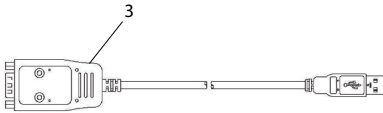
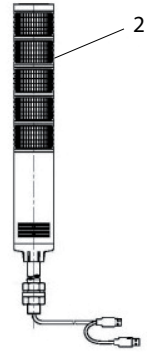
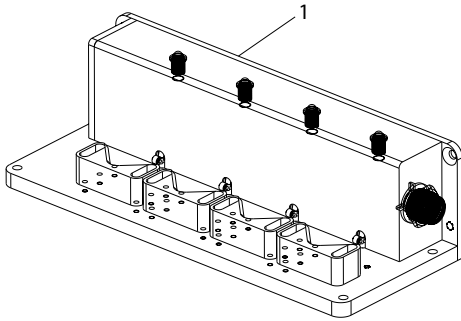
47565394001_ed6

Electric Tool Controller, QCD and QCM Series - Parts List

Item	Part Description	Part Number	(CCN)
	Plastic Housing Assembly		
1	Plastic Housing Assembly Kit - D Type (Display)	QC-A830D-K	(47627601001)
2	Plastic Housing Assembly Kit - M Type (Non-display)	QC-A830M-K	(47627602001)
*1A	Processing Module Label Kit	QC-301-K	(47578188001)
*	Brand Label	---	---
*	Model Serial Number (white)	---	---
*	Port Input Label	---	---
3	6 Pin Connector Assembly	436450600-A	(47595545001)
4	SSD Assembly with Standard License	QC-SSD-32-K	(47578177001)
	SSD Assembly with Fieldbus License	QC-SSD-32F-K	(47638959001)
	SSD Assembly with MES License	QC-SSD-32M-K	(47638960001)
	SSD Assembly with Fieldbus and MES License	QC-SSD-32FM-K	(47638961001)
	Frame Cap	---	---
	Cap Gasket	---	---
	Captive Screw 4-40 Thread	---	---
	SSD Card	---	---
	Pan Head Screw 4-40 X 1/4"	---	---
	SSD Card Label	---	---
5	MCE Board	5000892	(47576243001)
6	Cable Assembly - 24V/E-stop	QC-CABLE-24V	(47543288001)
7	PC104 Stack Connector for QC(XX)1, QC(XX)1-(X)	QC-PC104C	(47546597001)
	Optional PC104 Stack Connector Kits		
8	for DP Assembly, models QC(XX)2, QC(XX)2-(X)	QC-PC104-DP-K	(47595547001)
	PC 104 Board Assembly (DP)	---	---
	Standoff 4-40 X 0.6 inch Aluminum (8)	---	---
9	for DN Assembly, models QC(XX)3, QC(XX)3-(X)	QC-PC104-DN-K	(47595548001)
	PC 104 Board Assembly (DN)	---	---
	Standoff 4-40 X 0.6 inch Aluminum (8)	---	---
10	for RE Assembly, models QC(XX)4, QC(XX)4-(X)	QC-PC104-RE-K	(47595549001)
	PC 104 Board Assembly (RE)	---	---
	Standoff 4-40 X 0.6 inch Aluminum (8)	---	---
11	Carrier Board Assembly	QC-A499-CARR-K	(47578178001)
11A	Back Plane Board and Cable Assembly	QC-A499-BP-K	(47578179001)
	QC SSD Back Plane Top Level	---	---
	SSD Card Mounting Rail	---	---
	Pan Head Screw 6-32 X 3/16"	---	---
	Cable SSD Card	---	---
11B	Heatsink Fan Kit	QC-A524F	(47559738001)
12	Switching Power Supply	RPS-60-24	(45584034)
	Power Board		
13	Power Board 110V - 220V	4000889	(45537750)
14	Power Board 230V	4000889 220V	(47578174001)
15	IGBT Kit	QC-IGBT-K	(47578184001)
	Screw M4 X 30mm PFHMS	---	---
	Pressure Clamp	---	---
	Power Module	---	---
	Thermal Pad - IGBT Module	---	---
16	Bracket Mounting Kit	QC-A365-K	(47578183001)
	Bracket	---	---
	Bracket Wall Mounting	---	---
	Pan Head Screw M4 X 10mm	---	---
17	Brake Resistor	WDBR1-47RKT	(47088497)
18	Power Entry Module 230V	QC-309-1	(47590992001)
19	Power Entry Module 110V-220V	QC-309	(47611404001)
20	GFI	QC-410-2	(47542606001)
21	Inner Tool Cable Kit	QC-CABLE-TOOL-K	(47578185001)
	Cable Assembly - Tool Connector	---	---
	Cover AMP Connector	---	---
	* Power Cord, 120VAC, USA	PC10569945-S	(47607379001)
* Power Cord, 220VAC, USA	PC10569952-S	(47607380001)	
* Power Cord, 230VAC, Europe	PC10569978-S	(47607381001)	
22	Cable Retention Bracket	QC-366-C	(47626744001)

* Indicates not illustrated

Insight QC Controller Accessories (Optional)



Item	Part Description	Part Number	(CCN)
1	Socket Tray, 4 Position	QC-SKTR	(47615828001)
2	USB Tower Light	QC-TL-4	(47601629001)
3	Serial Interface Adapter	QC-ADPT-1	(47601630001)
	Digital IO Box, 8 Channel (includes 4A and 4B)	QC-DIO-8CH	(47617332001)
4A	Digital IO Box Assembly	---	---
4B	DIO Box Mounting Bracket Kit	QC-DIO-366-K	(47628739001)
5	Bar Code Scanner (1D and 2D)	QC-BC-SCAN-1	(47625754001)
6	Bar Code Scanner (1D)	QC-BC-SCAN-2	(47625755001)
7	Bar Code Scanner, Wireless (1D)	QC-BC-SCAN-WL	(47625756001)

Parts and Maintenance

When tool life has expired, it is recommended that the tool be disassembled, degreased and parts separated by material for proper recycling.

Tool repair and maintenance should only be carried out by an authorized Service Center.

Refer all communications to the nearest **Ingersoll Rand** office or distributor.

Related Documentation

Manuals can be downloaded from ingersollrandproducts.com

For additional information, refer to:

Product Safety Information Manual 16573701.

Product Information Manual 47565393001.

Product Installation Manual 47630657001.

Notes:

ingersollrandproducts.com

© 2018 *Ingersoll Rand*

