



**45527777**  
Edition 2  
August 2015

# Electric Screwdrivers

ES45T, ES50T and ES50TC

---

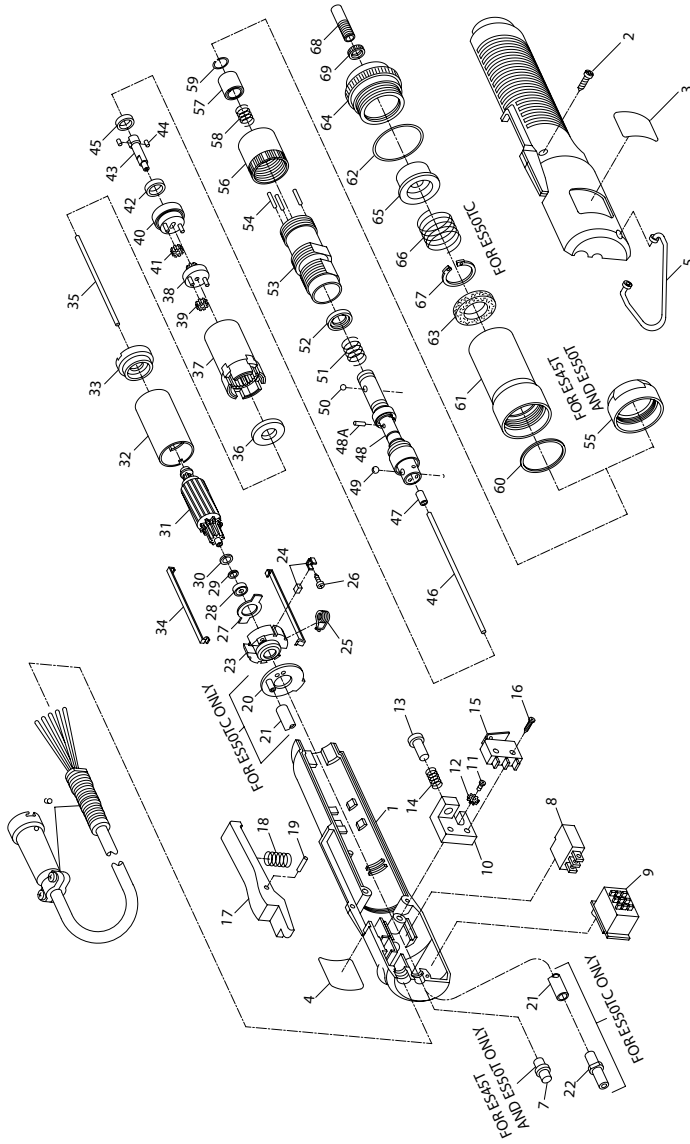
## Parts Information



Save These Instructions

 **Ingersoll Rand**<sup>®</sup>

Models ES45T, ES50T and ES50TC Electric Screwdriver - Exploded View



(Dwg. TPA1261-2)

## Models ES45T, ES50T and ES50TC Electric Screwdriver - Parts List

Item	Part Description	Part Number	Item	Part Description	Part Number
1	Housing Assembly		37	Gear Case	
	for ES45T and ES50T	ES50T-A416		for ES45T	ES45T-451
	for ES50TC	ES50TC-A416		for ES50T and ES50TC	ES50T-451
2	Housing Screw (3)	ES40T-703	38	Gear Head Assembly	
3	Nameplate			for ES45T	ES45T-452
	for ES45T	ES45T-301		for ES50T and ES50TC	ES50T-452
	for ES50T	ES50T-301	39	Gear Head Planet Gear (3)	
for ES50TC	ES50TC-301	for ES45T		ES45T-456	
Warning Label	ES45T-99	for ES50T and ES50TC		ES50T-456	
4	Suspension Bail	ES50T-426	40	Spindle Assembly	ES40T-A8
6	Power Cord Assembly	ES40T-249	41	Spindle Planet Gear (3)	
7	Bushing (for ES45T and ES50T only)	ES50T-424		for ES45T	ES45T-456
8	Trigger Switch	ES40T-624		for ES50T and ES50TC	ES50T-456
9	Reverse Switch	ES50T-190	42	Thrust Washer	ES40T-608
10	Shutoff Switch Plate		43	Cam	
	for ES45T and ES50T	ES40T-245		for ES45T	ES45T-458
	for ES50TC	ES50TC-224		for ES50T and ES50TC	ES50T-458
11	Switch Plate Screw	ES40T-711	44	Cam Pin (2)	ES50T-459
12	Screw Lock Washer	ES40T-712	45	Collar	ES50T-461
13	Plunger	ES40T-246	46	Pushrod (1.650" long)	ES50T-174
14	Plunger Spring	ES40T-247	47	Guide Sleeve	ES40T-243
15	Brake Switch	ES40T-172	48	Bit Holder Assembly	
16	Screw (2)	ES40T-710		for ES45T	ES45TC-69
17	Trigger	ES50T-427		for ES50T and ES50TC	ES50TC-69
18	Trigger Spring	ES50T-433	48A	Pin	ES50TC-755
19	Trigger Pin	ES40T-705	49	Cam Guide Ball (2)	
20	Shield Plate (for ES50TC only)	ES50TC-76		for ES45T	ES45T-696
21	Tube (for ES50TC only)	ES50TC-899		for ES50T and ES50TC (.156" dia.)	2U-696
22	Tube Nozzle (for ES50TC only)	ES50TC-321	50	Bit Retaining Ball (.094" dia.) (2)	R008B-263
	Motor Assembly		51	Clutch Spring	
	for ES45T	ES45T-107		Light Spring (.055" dia . wire)	ES50T-431
	for ES50T	ES50T-107		Standard Spring (.071" dia wire)	ES50T-462
23	Rear End Plate	ES50TC-75	52	Clutch Spring Plate	
	for ES45T and ES50T	ES45T-107		for ES45T and ES50T	ES40T-237
24	Brush Package (includes [10] Brush Assemblies)	EL0109B-BP		for ES50TC	ES50TC-474
	Brush Spring (2)	ES40T-218	53	Clutch Housing	ES50T-470
26	Brush Screw (2)	ES40T-0702	54	Clutch Adjusting Pin (3)	
27	Side Plate	ES40T-701		for ES45T	ES45T-735
28	Rear Armature Bearing	ES40T-700		for ES50T and ES50TC	ES60T-735
29	Shim (.238" O.D. x .02" thick) (2)	ES40T-0701	55	Coupling (for ES45T and ES50T only)	ES50T-491
30	Shim		56	Clutch Adjusting Ring	ES50T-471
	for ES45T and ES50T (.375" O.D. x .017" thick)	ES50T-733	57	Bit Sleeve	ES60T-304
	for ES50TC (.375" O.D. x .015" thick)	ES50TC-739	58	Sleeve Spring	
		for ES45T and ES50T		ES50T-317	
		for ES50TC		ES50TC-214	
31	Armature		59	Sleeve Stop Ring	ES60T-316
	for ES45T	ES45T-109	60	Packing Ring (for ES50TC only)	ES50TC-432
	for ES50T	ES50T-109	61	Nose Collar (for ES50TC only)	ES50TC-483
	for ES50TC	ES50TC-74	62	O-ring (for ES50TC only)	ES50TC-480
32	Yoke Assembly	ES40T-267	63	Filter (for ES50TC only)	ES50TC-479
33	Front End Plate	ES50T-434	64	Front Cap (for ES50TC only)	ES50TC-476
34	Assembly Spring (2)		65	Sleeve Holder (for ES50TC only)	ES50TC-477
	for ES45T and ES50T	ES50T-435	66	Holder Spring (for ES50TC only)	ES50TC-478
	for ES50TC	ES50TC-109	67	Holder Snap Ring (for ES50TC only)	ES50TC-484
35	Pushrod (1.403" long)	ES50T-441	68	Sleeve (for ES50TC only)	DLS2135
	Motor Clamp Spacer	ES50T-440	69	Sleeve Locknut (for ES50TC only)	ES50TC-316
36			*	Extension Cord	ES40TC-249-2

---

## **Parts and Maintenance**

When tool life has expired, it is recommended that the tool be disassembled, degreased and parts separated by material for proper recycling.

Tool repair and maintenance should only be carried out by an authorized Service Center.

Refer all communications to the nearest **Ingersoll Rand** office or distributor.

---

## **Related Documentation**

Manuals can be downloaded from [ingersollrandproducts.com](http://ingersollrandproducts.com).

For additional information, refer to:

Product Safety Information Manual 16573685.

Product Information Manual 45527702.

Maintenance Information Manual 45527801.

---

**Notes:**

**Notes:**

---

---

**Notes:**

[ingersollrandproducts.com](http://ingersollrandproducts.com)

© 2015 Ingersoll Rand

