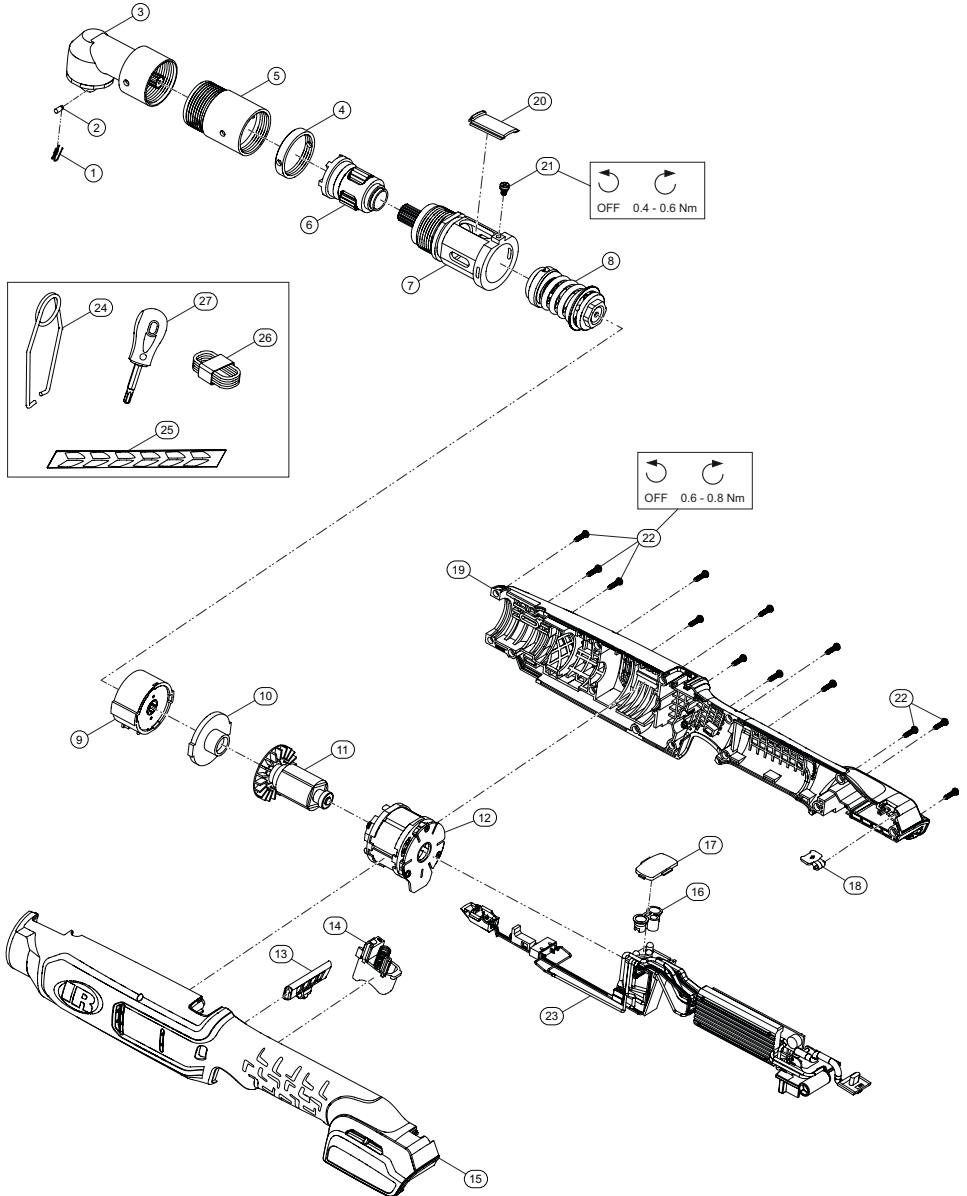


**QC Clutch Angle Tool Series, Cordless Screwdriver - Exploded View**



(Dwg. TL-QC2A-PLM-1)



## QC Clutch Angle Tool Series, Cordless Screwdriver - Parts List

Item	Part Description	Part Number (CCN)	Item	Part Description	Part Number (CCN)
*	Angle Head Kit	TK-QC2A-550	23	PCBA Kit	---
1	Socket, Retaining Spring	---	*	PCBA Assembly for QCP2A3056	TK-QC2A-499-P30
2	Socket, Retaining Pin	---		PCBA Assembly for QCN2A3056	TK-QC2A-499-N30
3	Angle Head Assembly	---	*	Suspension Bail Kit	VP1-365
*	Front Gear Case Kit	TK-QC2A-064	24	Suspension Bail	---
4	Clamp Nut	---	*	Tool Label Kit	TK-QC2-300
5	Front Gear Case	---	25	Tool Foot Label	---
6	Planetary Gear Assembly	---	*	USB Kit	TK-QC2-USB
7	Clutch Housing Assembly	---	26	USB Cable	---
8	Clutch Mechanism Kit	TK-QC2A-581	*	Clutch Screwdriver Kit	TK-QC2P-306
*	Gearbox Assembly Kit	TK-QC2A-750	27	Clutch Screwdriver	---
9	Gearbox Assembly	---	*	Fastener Kit	TK-QC2A-105
10	Front Plate	---	21	Clutch Cover Screw (1 required)	---
*	Motor Assembly	TK-QC2A-054	22	Housing Screw (13 required)	---
11	Motor Rotor	---	*	20V Li-ion Battery Pack	---
12	Motor Stator	---		2.5Ah	BL2012 (47515903001)
*	Switch Kit	TK-QC2A-250		5.0Ah	BL2022 (47515902001)
13	Directional Switch	---	*	Battery Charger	---
14	Trigger	---		Battery Charger, Single Bay	BC1121 (47507879001)
*	Housing Kit	TK-QC2A-040		Battery Charger, Dual Bay	BC1221
15	Left Housing	---			
16	LED Pipe	---			
17	LED Backcap	---			
18	USB Cover	---			
19	Right Housing	---			
20	Clutch Cover	---			
21	Clutch Cover Screw (1 required)	---			
22	Housing Screw (13 required)	---			

\* Indicates not illustrated.

### Parts and Maintenance

When tool life has expired, it is recommended that the tool be disassembled, degreased and parts separated by material for proper recycling.

Tool repair and maintenance should only be carried out by an Authorized Service Center.

Refer all communications to the nearest **Ingersoll Rand** office or distributor.

### Related Documentation

Manuals can be downloaded from [ingersollrand.com](http://ingersollrand.com)

For additional information, refer to:

Product Safety Information Manual 47114541

Product Information Manual TL-QC2-PIM

Parts Information Manual of QC Clutch Pistol Tool Series TL-QC2P-PLM

CE-Declaration of Conformity TL-QC2-DOC

UK-Declaration of Conformity TL-QC2-DOC-UK