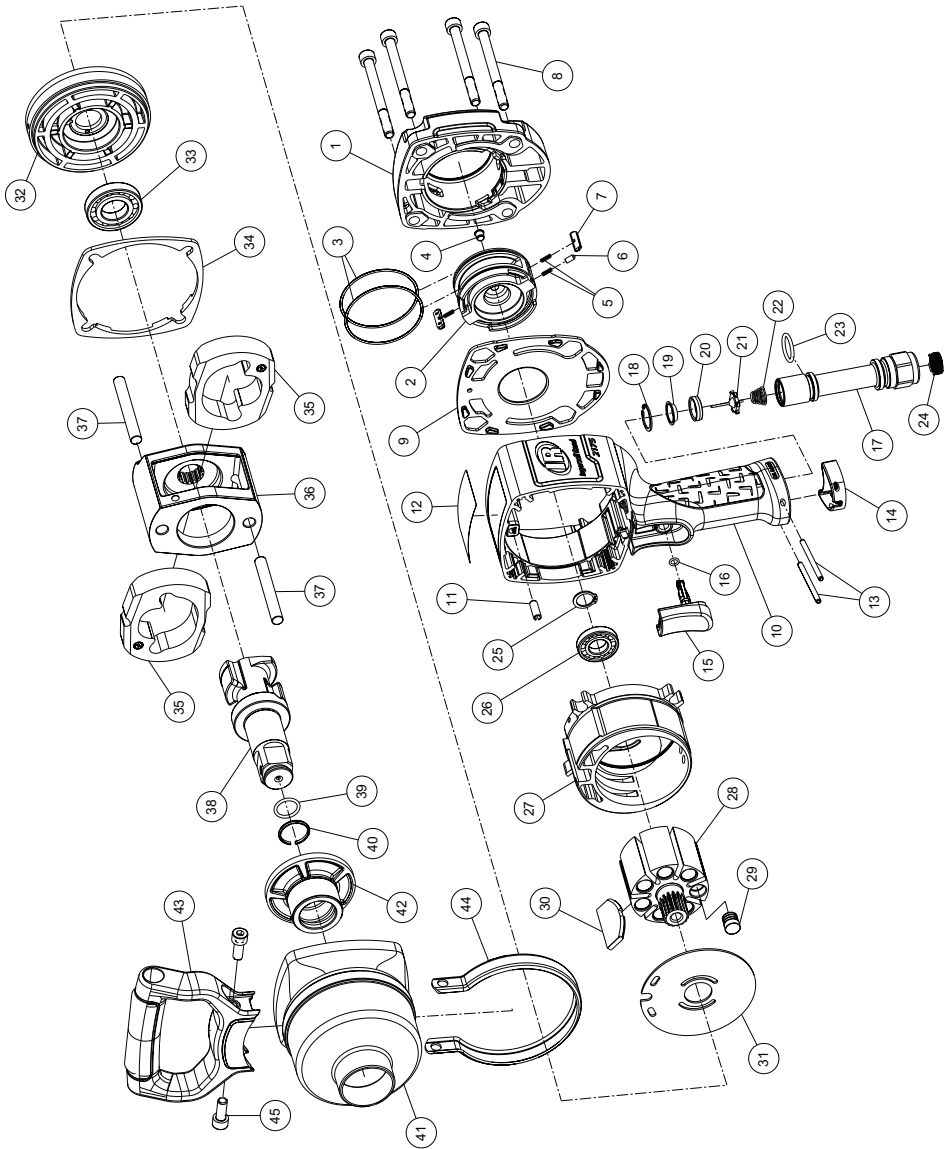


2175MAX Series Air Impact Wrench - Exploded View



(Dwg. 2175MAX)



2175MAX Series Air Impact Wrench - Parts List

Item	Part Description	Part Number	(CCN)	Item	Part Description	Part Number	(CCN)
1	BackCap Assembly	2175-D102	(47627100001)		Hammer Mechanism Kit	2850-THK1	(47584530001)
	BackCap	---	---	36	Hammer Frame	---	---
	Reverse Valve Bushing	---	---	37	Hammer Pin (2)	2850-704	(47538727001)
	Power Regulator Assembly	2175-A249	(47593986001)		Anvil Assembly (includes 38, 39, 40)		
2	Power Regulator	---	---		for Model 2175MAX	2850-A626	(47556347001)
3	O-Ring, Reverse Valve (2)	Y325-36	(04059150)		for Model 2175MAX-6	2850-A626-6	(47556346001)
4	Grease, Fitting	131-188	(04700878)	38	Anvil	---	---
5	Detent Spring (3)	107XPA-41	(80174659)		Socket Retaining Kit	2155-K425	(47118120)
6	Detent Pin	107XPA-49	(80174642)	39	O-Ring	---	---
7	Vane, Power Regulator (2)	2175-242	(47648880001)	40	Socket Retaining Spring	---	---
8	Screw, Hammer Case, M8 X 90 (4)	2850-638	(47549665001)		Hammer Case, Assembly		
9	Gasket, Rear	2175-283	(47585325001)		for Model 2175MAX	2850-D727	(47542637001)
	Housing Assembly	2175MAX-A40	(47629425001)	41	Hammer Case	---	---
10	Housing	---	---	42	Bushing, Hammer Case	2850-641	(47576494001)
11	Cylinder Dowel	285B-98	(16571606)		for Model 2175MAX-6	2850-6-D727	(47548772001)
12	Nameplate/Warning Label	---	---	41	Hammer Case	---	---
	for Model 2175MAX	2175MAX-301	(47586256001)	42	Bushing, Hammer Case	2850-6-641	(47545350001)
	for Model 2175MAX-6	2175MAX-6-301	(47586236001)		Auxiliary Handle Kit	2175-K48	(47624828001)
13	Spiral Spring Pin, 4 X 48 (2)	2175-120	(47586346001)	43	Auxiliary Handle	---	---
14	Exhaust Deflector	2175-40X	(47584381001)	44	Strap, Auxiliary Handle	---	---
	Trigger Assembly	2175-D93RD	(47587006001)	45	Socket Head Cap Screw, M8 X 20 (2)	---	---
15	Trigger	---	---	*	Hang Tag, Auxiliary Handle	---	---
16	O-Ring, Trigger	---	---		Tune-Up Kit	2175MAX-TK1	(47629423001)
	Inlet Bushing Assembly	2175-D565	(47581875001)		Inlet Parts Kit	---	---
17	Inlet Bushing	---	---	3	O-Ring, Reverse Valve (2)	---	---
	Inlet Parts Kit	2175-K303	(47600362001)	5	Detent Spring	---	---
18	Retaining Ring	---	---	6	Detent Pin	---	---
19	Support, Valve Seat	---	---	9	Gasket, Rear	---	---
20	Throttle Valve Seat	---	---	11	Cylinder Dowel	---	---
21	Throttle Valve	---	---	13	Spiral Spring Pin, 4 X 48 (2)	---	---
22	Spring, Tip Valve	---	---	16	O-Ring, Trigger	---	---
23	O-Ring, Inlet	---	---	25	Retaining Ring, Cylinder	---	---
24	Inlet Screen (insert)	---	---	26	Ball Bearing, Cylinder	---	---
25	Retaining Ring, Cylinder	2850-6	(47555059001)	30	Vane Pack (set of 7)	---	---
26	Ball Bearing, Cylinder	4E-510	(03080009)	33	Ball Bearing, End Plate	---	---
27	Cylinder	2850-3	(47541435001)	34	Gasket, Hammer Case	---	---
	Rotor Assembly	2850-A53	(47584529001)	*	Socket Retaining Kit	---	---
28	Rotor	---	---	*	Piped-Away Exhaust Kit	2175-K285	(47646977001)
29	Rotor Plug (14)	2850-229	(47549666001)	*	External Muffler Kit	2175-K674	(47648454001)
30	Vane Pack (set of 7)	2850-A42-7	(47588290001)	*	Air Care Kit (grease gun, grease, oil)	105-LBK1	---
31	Wear Plate	2850-11X	(47539995001)	*	Air Tool Oil (4 oz. Bottle)	1024	---
32	End Plate, Front	2850-11	(47542198001)	*	Air Tool Oil (1 Pint Bottle)	10P	---
33	Ball Bearing, End Plate	834-24	(03065588)	*	Premium Impact Grease (1 Lb Can)	105-1LB	---
34	Gasket, Hammer Case	2850-36RD	(47550664001)	*	Premium Impact Grease (8 Lb Can)	105-8LB	---
35	Hammer (2)	2850-724	(47538629001)	*	Grease Gun	R000A2-228	---

* Indicates Not Illustrated.

Parts and Maintenance

When tool life has expired, it is recommended that the tool be disassembled, degreased and parts separated by material for proper recycling.

Tool repair and maintenance should only be carried out by an authorized Service Center.

Refer all communications to the nearest **Ingersoll Rand** office or distributor.

Related Documentation

Manuals can be downloaded from ingersollrandproducts.com

For additional information, refer to:

Product Safety Information Manual 04580916.

Product Information Manual 47582172001.

Declaration of Conformity 47631658001.

