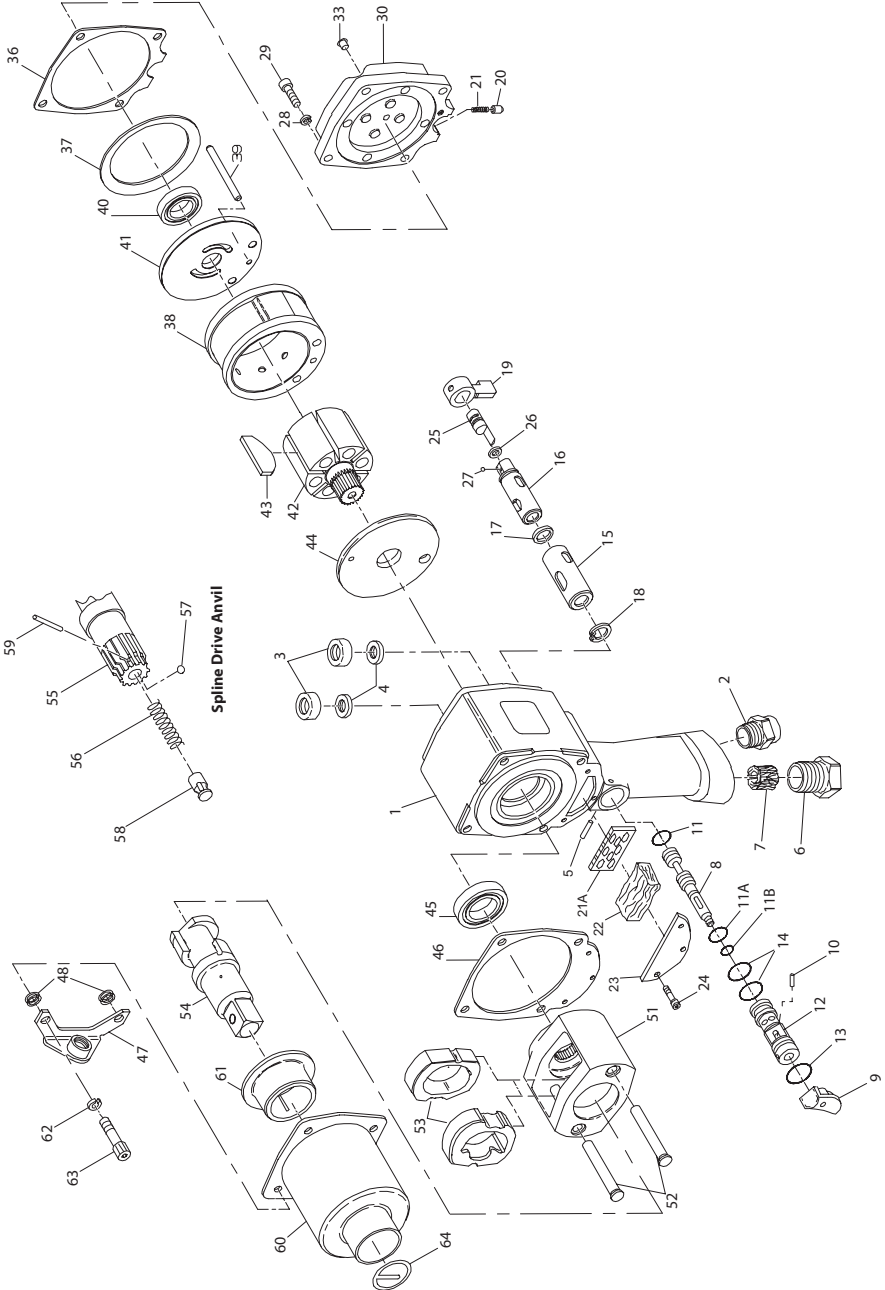


293 Series Impact Wrench - Exploded View



(Dwg. TPA1221-3)



03536059
Edition 9
October 2013

293 Series Impact Wrench - Parts List

Item	Part Description	Part Number	Item	Part Description	Part Number
1	Motor Housing Assembly	293-A40	• 43	Vane Packet (set of 6 Vanes)	2940-42-6
2	Inlet Bushing Assembly	2940P-A565	44	Front End Plate	2934-11
3	Air Port Gasket (2)	R44H-210A	45	Front Rotor Bearing	810-97
4	Gasket Retainer (2)	2940-200	• 46	Hammer Case Gasket	2940P-36
5	Throttle Valve Assembly Retaining Pin	2940P-757	47	Side Spade Handle Bracket	2934-364
6	Exhaust Deflector	2940P-23	48	Handle Bracket Spacer (2)	2934-140
7	Silencer	2940P-311	51	Hammer Frame Assembly	2940-A703
8	Throttle Valve Assembly	293-A302	• 52	Hammer Pin (2)	2940-704
9	Trigger	5RA-93	• 53	Hammer (2)	2940-724
• 10	Trigger Retaining Pin	AF120-322	54	1" Square Drive Anvil	2940-726
• 11	Throttle Valve Face O-ring	PS3-67	55	Spline Drive Anvil Assembly	2940-A526
• 11A	Throttle Valve O-ring	293-134	56	Retaining Plunger Spring	2940-231
• 11B	Throttle Valve Stem O-ring	293-669	57	Socket Retaining Ball	D04-280
12	Throttle Valve Bushing Assembly	293-A503	58	Retaining Ball Plunger	845-230
• 13	Throttle Valve Bushing O-ring (large)	AD100-18	59	Plunger Retaining Pin	845-128
• 14	Throttle Valve Bushing O-ring (small) (2)	AFH120A-358	60	Hammer Case Assembly	
15	Reverse Valve Bushing	2940P-330S		for 293 and 293S	293-A727
16	Reverse Valve Assembly	2940P-A329		for 293-EU and 293S-EU	293-EU-A727
• 17	Reverse Valve Seal	85H-167	61	Hammer Case Bushing	2934-641
18	Reverse Valve Stop	RXA21-343	62	Hammer Case Cap Screw Lock Washer (4)	34U-58
19	Reverse Lever	2934-658A	63	Hammer Case Cap Screw (4)	834-638
20	Reverse Lock Plunger	4U-663B	64	Socket Retainer Ring	RR10015S
21	Reverse Lock Spring	4U-664	*	Hammer Case Label	
21A	Exhaust Diffuser	2940P-123		for 293 and 293S	WARNING-2-99
22	Silencer	2940P-311		for 293-EU and 293S-EU	EU-99
23	Silencer Cover	2940P-240	*	Oversize Hammer Case Bushing	
24	Silencer Cover Screw (3)	401-638		.005" oversize	2934-641-5
25	Power Regulator Assembly	2940P-A249		.010" oversize	2934-641-10
• 26	Power Regulator Seal	R1A-159	*	.015" oversize	2934-641-15
• 27	Power Regulator Retaining Ball	AV1-255	*	Dead Handle	834-48
28	Housing Cover Lock Washer (4)	8U-58	*	Horizontal Hanger	2934-366
29	Housing Cover Cap Screw (4)	510-638	*	Nameplate	
30	Housing Cover Assembly	1712P-A102		for 293 and 293S	293-301
33	Grease Fitting	1305R-188	*	for 293-EU and 293S-EU	293-EU-301
• 36	Housing Cover Gasket	2934-283	*	Namplate Screw (3)	C32-302
37	Motor Clamp Washer	2934-207		Tune-up Kit (includes illustrated parts	
38	Cylinder	2940-3		3 [2], 4 [2], 11, 13, 14 [2], 17, 20, 21,	2940-TK3
39	Cylinder Dowel	2940-98		22 [2], 26, 32, 35, 36, 40, 43, 45 and 46)	
40	Rear Rotor Bearing	508-97	*	Overhaul Kit (includes illustrated parts	
41	Rear End Plate	2934-12		37, 39, 40, 41, 44, 45, 52 [2], 53 [2], 54,	2940A2-OHK
42	Rotor	2940-53		61 and Tune-up Kit 2940-TK3)	

* Not Illustrated.

• To keep downtime to a minimum it is desirable to have on hand certain repair parts. We recommend that you stock one (pair or set) of each Part indicated by a bullet (•) for every four tools in service.

Parts and Maintenance

When the life of the tool has expired, it is recommended that the tool be disassembled, degreased and parts be separated by material so that they can be recycled.

Tool repair and maintenance should only be carried out by an authorized Service Center.

Refer all communications to the nearest **Ingersoll Rand** Office or Distributor.

Related Documentation

For additional information refer to:

Air Impact Wrench Product Safety Information Manual 04580916.

Air Impact Wrench Product Information Manual 16581951.

Manuals can be downloaded from ingersollrandproducts.com



ingersollrandproducts.com
© 2013 Ingersoll Rand

03536059
Edition 9
October 2013