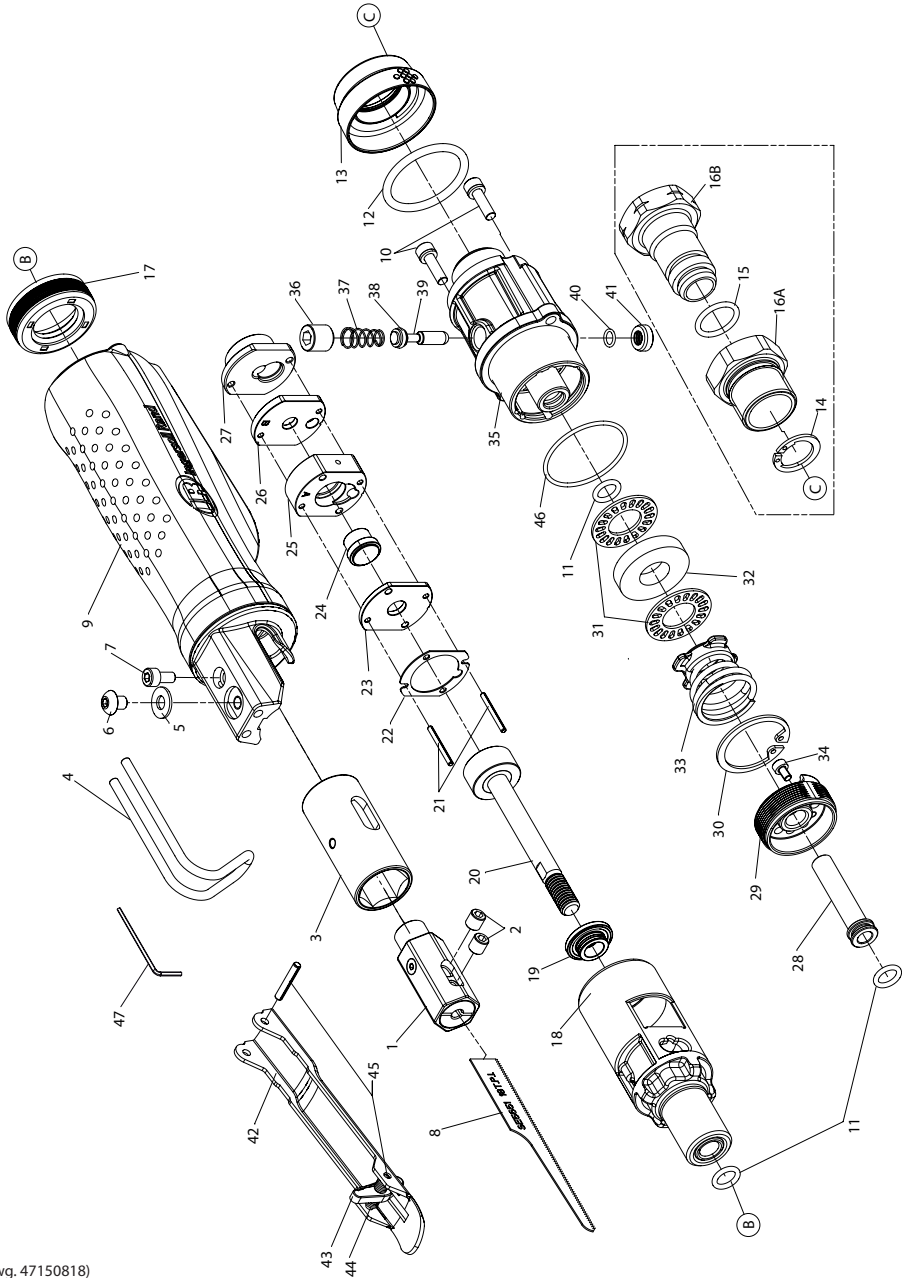


529, Air Reciprocating Saw - Exploded View



(Dwg. 47150818)

## 529, Air Reciprocating Saw - Parts List

Item	Part Description	Part Number	Item	Part Description	Part Number
	Collet Assembly	529-274A		Valve Assembly	529-32A
1	Collet	---	25	Valve	---
2	Collet Screw (2)	---	26	Top Stem Valve	---
3	Blade Guide Holder	529-6	27	Body-throttle Valve	---
4	Blade Guide	529-321	28	Inlet	529-205
5	Flat Washer	529-67	29	Deflector	529-23
6	Half Round Hexagonal Bolt	529-440	30	C - Ring	529-18
7	Hexagonal Bolt	529-665	31	Muffler Cap (2)	529-312
8	24T Coarse Blade	P4CS-6	32	Muffler	529-311
	32T Fine Blade	P4FS-6	33	Spring Unit	529-623
9	Housing Assembly	529-A40	34	Hexagonal Bolt	529-439
10	Bolt Assembly (2)	529-78	35	End Cap	529-202
11	O - Ring (2)	529-65	36	Hexagonal Screw	529-669
12	O - Ring	529-380	37	Valve Stem Spring	529-515
13	Deflector	529-23X	38	O - Ring	529-381
	Air Inlet Assembly	529-565X	39	Valve Stem	529-302
14	Ex-concentric Ring	---	40	O - Ring	529-159
15	O - Ring	---	41	Lining Ring-throttle Valve	529-50
16A	Air Inlet	---		Trigger Assembly	529-273A
16B	Air Inlet	---	42	Trigger	---
17	Oil Seal	529-272	43	Safety	---
18	Cylinder Unit	529-3	44	Spring	---
19	Feed Bumper	529-941	45	Spring Pin (2)	---
20	Piston Shaft	529-A5	46	O - Ring	529-283
21	Spring Pin (2)	529-504	47	Wrench (3 mm)	529-69
22	Gasket	529-706			
23	Bottom Stem Valve	529-943			
24	Discharge Sheet	529-17			

### Parts and Maintenance

When the life of the tool has expired, it is recommended that the tool be disassembled, degreased and parts be separated by material so that they can be recycled.

Tool repair and maintenance should only be carried out by an authorized Service Center.

Refer all communications to the nearest **Ingersoll Rand** Office or Distributor.

### Related Documentation

For additional information refer to:  
 Product Safety Information Manual 16578809.  
 Product Information Manual 16574873.

Manuals can be downloaded from [ingersollrandproducts.com](http://ingersollrandproducts.com)