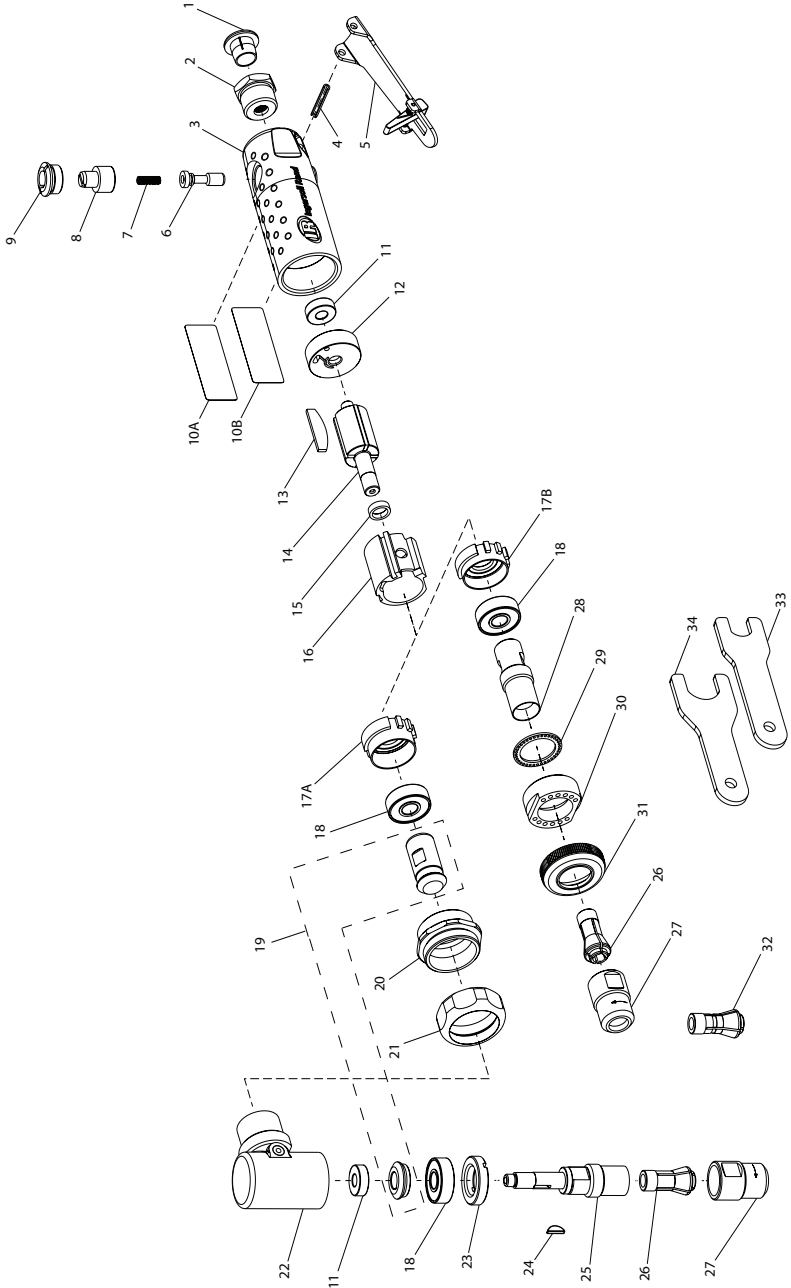


301B, 307B, 301B-M and 307B-M Air Die Grinder - Exploded View



(Dwg. 48489835)



301B, 307B, 301B-M and 307B-M Air Die Grinder - Parts List

Item	Part Description	Part Number	Item	Part Description	Part Number
1	Plastic Plug	PF-PLUG	16	Cylinder	301-3
2	Inlet Bushing Assembly	302A-A565	17A	Front Endplate Assembly (for 301B)	301-A11
*	Inlet Bushing	--	17B	Front Endplate Assembly (for 307B)	307A-A11
*	Insert Screen	--	18	Bearing	301-24
3	Housing Assembly	301B-A40	19	Gear Pinion Set (for 301B)	3102-A552-1.25
*	Housing	--	*	Pinion (for 301B)	--
*	Bushing	--	*	Gear Pinion Set (for 301B)	--
4	Pin	170-504	20	Clamp Nut (for 301B)	301-306
5	Lever Assembly	307B-A400	21	Nut (for 301B)	301-27
*	Lever	--	22	Angle Housing (for 301B)	301-A550
*	Spring	--	*	Elbow (for 301B)	--
*	Spring Pin	--	*	Grease Inject (for 301B)	--
*	Latch	--	23	Cap (for 301B)	301-531
6	Throttle Valve Assembly	302A-A302	24	Pinion Key (for 301B)	301-579
7	Spring	301-51	25	Arbor Kit (for 301B)	301-K591A
8	Regulator Assembly	301-A249	*	Collet Arbor (for 301B)	--
9	Valve Cap Assembly	301-A266	*	Spacer (for 301B)	--
10A	Tool Label (for 301B)	301B-301	26	Collet, 1/4 in.	301-700
	Tool Label (for 301B-M)	301B-M-301	27	Collet Nut	301-699
10B	Tool Label (for 307B)	307B-301	28	Collet Body (for 307B)	307A-214
	Tool Label (for 307B-M)	307B-M-301	29	Muffler (for 307B)	307A-311
11	Bearing	301-22	30	Lock Nut (for 307B)	307A-27
12	Rear Endplate Assembly	301-A12	31	Housing Cap (for 307B)	307A-699
13	Vane Pack (Set of 4)	301-42-4	32	Collet 6mm	301-700B
*	Vane	--	33	Collet Body Wrench	301-69A
14	Rotor	301-53	34	Collet Nut Wrench	301-69B
15	Spacer	301-448			

* Indicates not illustrated.

Parts and Maintenance

When tool life has expired, it is recommended that the tool be disassembled, degreased and parts separated by material for proper recycling. Tool repair and maintenance should only be carried out by an authorized Service Center.

Refer all communications to the nearest **Ingersoll Rand** office or distributor.

Related Documentation

Manuals can be downloaded from ingersollrand.com

For additional information, refer to:
 Product Safety Information Manual 04580288.
 Product Information Manual 48483689.
 Declaration of Conformity 47624083001.