



TL-545-PLM
Edition 2
January 2025

Air Grinder

5445MAX, 5445MAX-M, 545MAX, and 545MAX-M

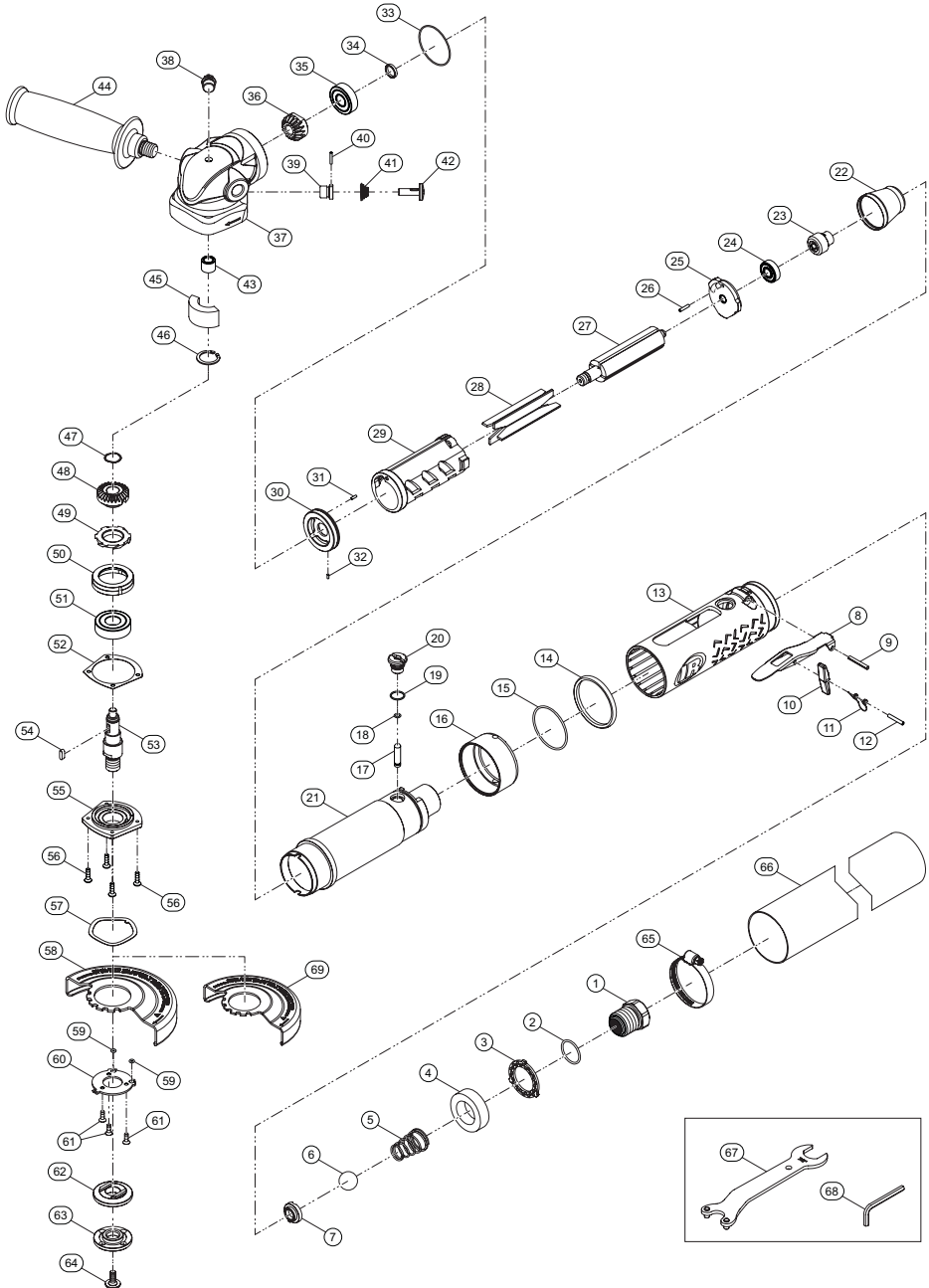
Parts Information



Save These Instructions

 **Ingersoll Rand**[®]

5445MAX, 5445MAX-M, 545MAX, and 545MAX-M, Air Grinder - Exploded View



(Dwg. TL-545-PLM-1)

5445MAX, 5445MAX-M, 545MAX, and 545MAX-M, Air Grinder - Parts List

Item	Part Description	Part Number	Item	Part Description	Part Number	
*	Air Inlet Assembly	TA-545-565	44	Dead Handle	TP-545-048	
1	Air Inlet	---	45	Oil Felt	TP-545-311	
2	O-Ring		46	Retaining Ring	TP-545-018	
3	Silencer		47	Wave Washer	TP-545-246	
4	Muffler		48	Bevel Gear	TP-545-010	
5	Spring		49	Deflector	TP-545-023	
6	Delrin Ball		50	Bearing Seat	TP-545-531	
7	Valve Seat		51	Ball Bearing	TP-545-097	
*	Throttle Lever Assembly	TA-545-093	52	Gasket	TP-545-283	
8	Throttle Lever	---	53	Spindle	TP-545-807	
9	Spring Pin		53	Spindle, M	TP-545-807-M	
10	Safety Bar		54	Key, Square	TP-545-754	
11	Spring		55	Cap	TP-545-055	
12	Spring Pin		56	Screw (set of 4)	TP-545-078	
13	Grip		---	*	Guard Kit	TA-545-106
*	For Model 5445MAX	TP-5445-747	57	Wave Washer	---	
	For Model 5445MAX-M	TP-5445-747-M	58	5" Guard		
	For Model 545MAX	TP-545-747	59	O-Ring (2 required)		
	For Model 545MAX-M	TP-545-747-M	60	Lock Plate		
14	Decoration Ring	TP-545-036	61	Screw (3 required)	TA-5445-106	
15	O-Ring	TP-545-801	*	Guard Kit		
16	Clamp	TP-545-582	57	Wave Washer		
17	Valve Stem	TP-545-303	69	4.5" Guard		
18	O-Ring	TP-545-282	59	O-Ring (2 required)		
19	O-Ring	TP-545-367	60	Lock Plate		
20	Screw Bushing	TP-545-229	61	Screw (3 required)		
21	Housing	TP-545-040	62	Flange		TP-545-337
22	Inlet Guide	TP-545-128		Flange, M		TP-545-337-M
23	Governor Assembly	TA-545-424	63	Flange Nut		TP-545-005
24	Ball Bearing	TP-545-022		Flange Nut, M	TP-545-005-M	
25	Rear End Plate	TP-545-012	64	Screw	TP-545-638	
26	Spring Pin	TP-545-504-1	65	Hose Clamp	TP-545-949	
27	Rotor	TP-545-053	66	Overhose	TP-545-873	
28	Vane (set of 4)	TP-545-042	67	Pin Wrench and Spanner	TP-545-026	
29	Cylinder	TP-545-003	68	Allen Wrench	TP-545-562	
30	Front End Plate	TP-545-011	*	Guard Warning Label	TP-444-99G	
31	Pin	TP-545-504-2	†	Tune-up Kit includes items (2, 4, 5, 15, 18, 19, 24, 26, 28, 31, 32, 33, 35, 41, 42, 44, 45, 46, 47, 51, 52, 54, 57, and 59)	TK-545-GTK	
32	Spring Pin	TP-545-504-3				
33	O-Ring	TP-545-065				
34	Spacer	TP-545-080				
35	Ball Bearing	TP-545-024				
36	Bevel Gear	TP-545-009	---			
*	Angle Head Assembly	TA-545-240				
37	Gear House	---				
38	Screw					
39	Bushing					
40	Pin					
41	Spring					
42	Spindle Stop Button					
43	Needle Bearing					

* Indicates not illustrated.

† Indicates common-wear parts. Maintain stock to reduce downtime.

Parts and Maintenance

When tool life has expired, it is recommended that the tool be disassembled, degreased and parts separated by material for proper recycling.

Tool repair and maintenance should only be carried out by an Authorized Service Center.

Refer all communications to the nearest **Ingersoll Rand** office or distributor.

Related Documentation

Manuals can be downloaded from **ingersollrand.com**

For additional information, refer to:

Product Safety Information Manual 04584959

Product Information Manual TL-545-PIM

CE-Declaration of Conformity TL-545-DOC

UK-Declaration of Conformity TL-545-DOC-UK

Notes:

Notes:

Notes:

[ingersollrand.com](https://www.ingersollrand.com)

© 2025 *Ingersoll Rand*

