



TL-319-PLM
Edition 1
June 2022

Vertical Polisher and Vertical Sander

318-B and 319-B

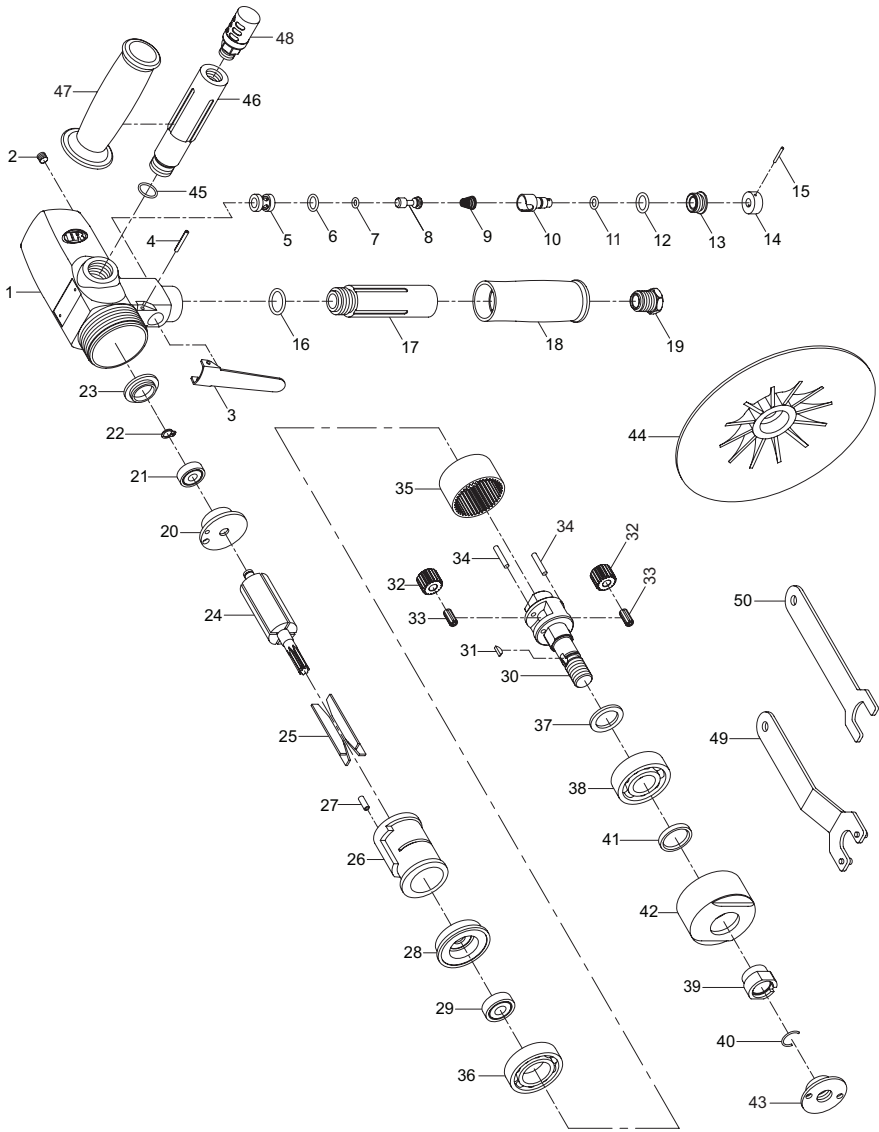
Parts Information



Save These Instructions

 **Ingersoll Rand**[®]

318-B, Vertical Polisher - Exploded View

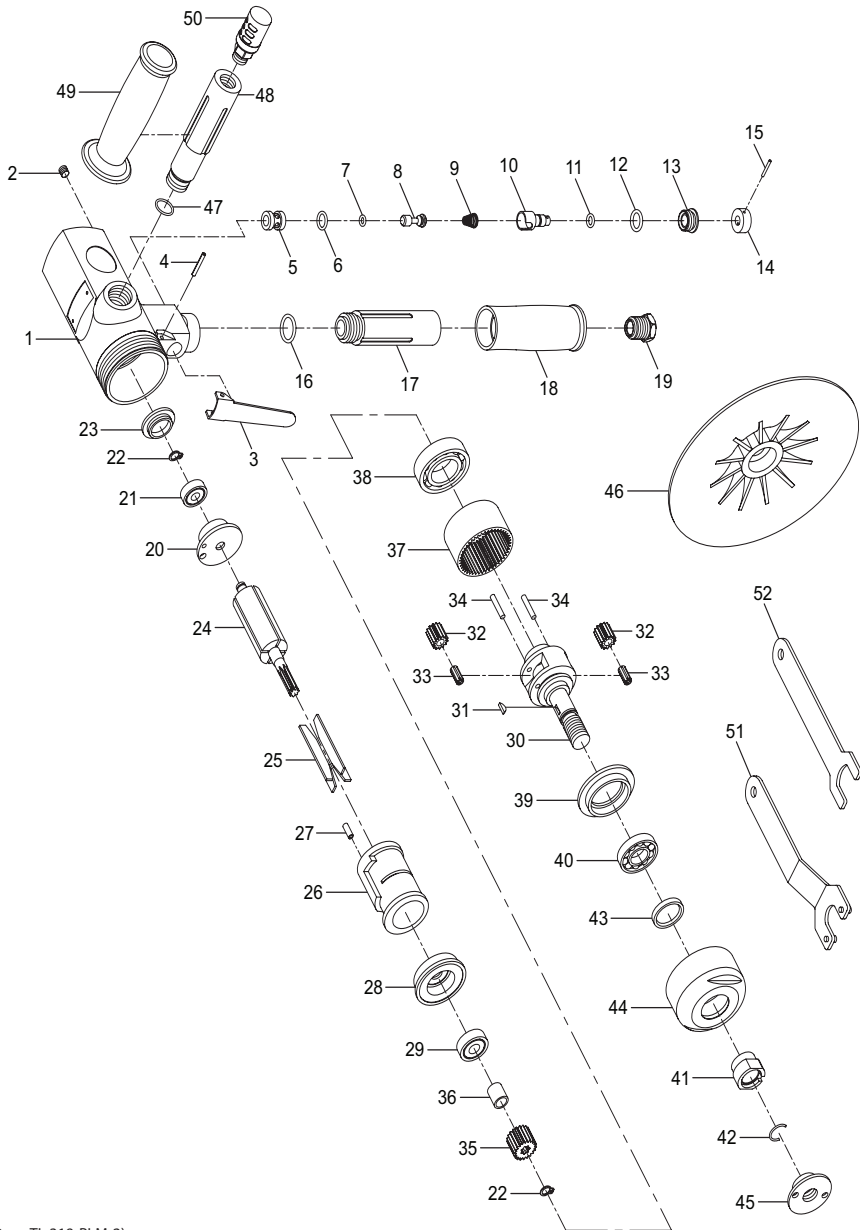


(Dwg. TL-319-PLM-1)

318-B, Vertical Polisher - Parts List

Item	Part Description	Part Number	Item	Part Description	Part Number
1	Motor Housing Assembly	318-B-A40		Cylinder Assembly	318-B-A3
	Motor Housing	---	26	Cylinder	---
	Warning Label	WARNING-39-99	27	Cylinder Pin	---
	Nameplate Label	318-B-301		Front End Plate Assembly	319-B-A11
2	Set Screw	---	28	Front End Plate	319-B-11
	Lever Assembly	319-B-A273	29	Front Rotor Bearing	319-B-22
3	Throttle Lever	---		Spindle Assembly	318-B-A591
4	Throttle Lever Pin	---	30	Spindle	---
	Throttle Assembly	319-B-A302	31	Spindle Key	319-B-253
5	Throttle Bushing	---		Planet Gear Assembly	318-B-A10
6	O-Ring	---	32	Planet Gear (2 required)	318-B-10
7	Throttle Valve Seal	---	33	Needle Bearing (2 required)	---
8	Throttle Valve	---	34	Planet Gear Pin (2 required)	---
9	Throttle Valve Spring	---	35	Ring Gear	318-B-37
10	Speed Regulator	---	36	Spindle Bearing	319-B-593
11	Regulator Seal	---	37	Front Arbor Washer	---
12	Valve Cap Seal	---	38	Front Arbor Bearing	318-B-509
13	Throttle Valve Cap	---		Clamp Nut Assembly	319-B-A86
14	Speed Regulator Knob	---	39	Clamp Nut	---
15	Spring Pin	---	40	Spindle Retaining Pin	---
	Inlet Handle Assembly	319-B-A169	41	Oil Seal	---
16	Inlet Handle Seal	---	42	Housing Nut	318-B-200
17	Inlet Handle	---	43	Pad Nut	319-B-226
18	Handle Grip	---	44	Pad	319-B-A825
19	Inlet Bushing	319-B-465		Exhaust Handle Assembly	319-B-A171
	Rear End Plate Assembly	319-B-A12	45	Exhaust Handle O-Ring	---
20	Rear End Plate	---	46	Exhaust Handle	---
21	Rear Rotor Bearing	319-B-97	47	Handle Grip	---
22	Retaining Ring	---	48	Exhaust Deflector	319-B-312
23	Rear Bearing Cap	---		Wrench Kit	319-B-A69
	Rotor Assembly	319-B-A53	49	Disk Wrench	---
24	Rotor	---	50	Arbor Wrench	---
25	Vane pack (Set of 4)	319-B-42-4			

319-B, Vertical Sander - Exploded View



(Dwg. TL-319-PLM-2)

319-B, Vertical Sander - Parts List

Item	Part Description	Part Number	Item	Part Description	Part Number
	Motor Housing Assembly	319-B-A40		Front End Plate Assembly	319-B-A11
1	Motor Housing	---	28	Front End Plate	319-B-11
	Warning Label	WARNING-39-99	29	Front Rotor Bearing	319-B-22
	Nameplate Label	319-B-301		Spindle Assembly	319-B-A591
2	Set Screw	---	30	Spindle	---
	Lever Assembly	319-B-A273	31	Spindle Key	319-B-253
3	Throttle Lever	---		Planet Gear Assembly	319-B-A10
4	Throttle Lever Pin	---	32	Planet Gear (2 required)	319-B-10
	Throttle Assembly	319-B-A302	33	Needle Bearing (2 required)	---
5	Throttle Bushing	---	34	Planet Gear Pin (2 required)	---
6	O-Ring	---		Pinion Gear Assembly	319-B-A551
7	Throttle Valve Seal	---	35	Pinion Gear	319-B-551
8	Throttle Valve	---	36	Pinion Spacer	---
9	Throttle Valve Spring	---	22	Retaining Ring	---
10	Speed Regulator	---	37	Ring Gear	319-B-37
11	Regulator Seal	---	38	Spindle Bearing	319-B-593
12	Valve Cap Seal	---	39	Front Arbor Bearing Retainer	---
13	Throttle Valve Cap	---	40	Front Arbor Bearing	319-B-509
14	Speed Regulator Knob	---		Clamp Nut Assembly	319-B-A86
15	Spring Pin	---	41	Clamp Nut	---
	Inlet Handle Assembly	319-B-A169	42	Spindle Retaining Pin	---
16	Inlet Handle Seal	---	43	Oil Seal	---
17	Inlet Handle	---	44	Housing Nut	319-B-200
18	Handle Grip	---	45	Pad Nut	319-B-226
19	Inlet Bushing	319-B-465	46	Pad	319-B-A825
	Rear End Plate Assembly	319-B-A12		Exhaust Handle Assembly	319-B-A171
20	Rear End Plate	---	47	Exhaust Handle O-Ring	---
21	Rear Rotor Bearing	319-B-97	48	Exhaust Handle	---
22	Retaining Ring	---	49	Handle Grip	---
23	Rear Bearing Cap	---	50	Exhaust Deflector	319-B-312
	Rotor Assembly	319-B-A53		Wrench Kit	319-B-A69
24	Rotor	---	51	Disk Wrench	---
25	Vane pack (Set of 4)	319-B-42-4	52	Arbor Wrench	---
	Cylinder Assembly	319-B-A3			
26	Cylinder	---			
27	Cylinder Pin	---			

Parts and Maintenance

When tool life has expired, it is recommended that the tool be disassembled, degreased and parts separated by material for proper recycling. Tool repair and maintenance should only be carried out by an authorized Service Center.

Refer all communications to the nearest **Ingersoll Rand** office or distributor.

Related Documentation

Manuals can be downloaded from ingersollrand.com

For additional information, refer to:

Product Safety Information Manual 04580387

Product Information Manual TL-319-PIM

Notes:

Notes:

[ingersollrand.com](https://www.ingersollrand.com)

© 2022 *Ingersoll Rand*

